

6.8 Motor Installation and Removal (Fan Wheel Adjustment)



Check:

- Uneven browning results
- Electrical humming noises
- Unit runs mechanically loud



Safety:

- When working on the unit, make sure that the main power supply is disconnected (An all-pole isolation switch with a minimum contact opening of 3mm must be located close to the unit – on site) and ensured against switching on again

Motor Removal



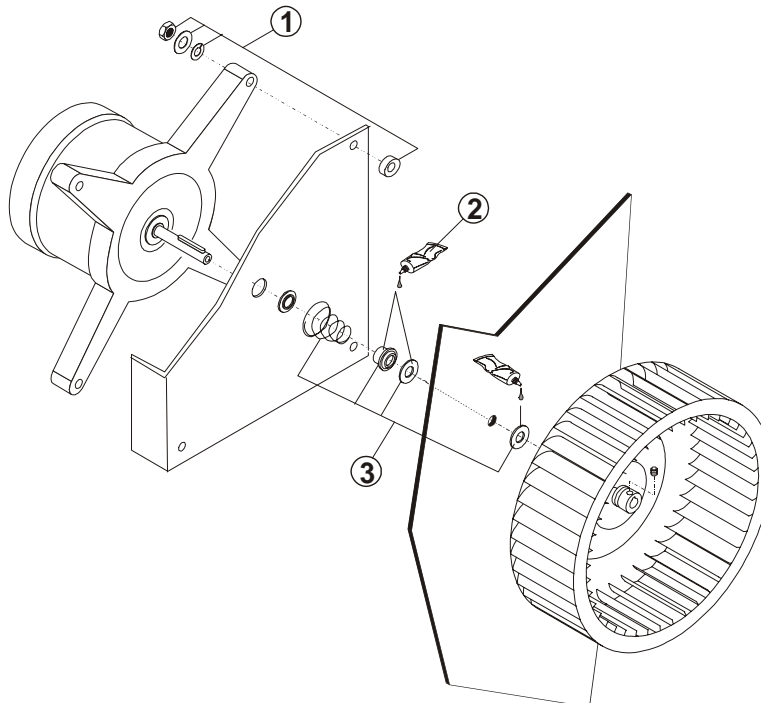
Instruction – Removing the motor:

- Switch unit off (see safety notice above)!
- Disconnect the electrical supply from the motor protection switch K5 / K55.
Attention: >Note the electrical connections!
- Remove the PTC-connection from the motor to the control X7/4
Attention: Note the electrical connections!
- Remove the grub screw from the fan wheel.
- Pull the fan wheel off the motor shaft using a 2-claw extractor.
- Remove the 4 hexagon nuts M 8 from the motor flange bolts.
- Extract the motor together with the motor plate.



Note:

- By heating the fan wheel up, it will become easier to remove.
- Special tool: 2-claw extractor



1

2 = Molykote Ti 1200 Part. No.: 7004018

3 = Set of seals for motor spindle Part. No.: 5008067

Motor installation and fan wheel adjustment



Safety:

- Pay attention to motor direction (motor direction arrow).
- **Attention:** With motors that have 2 speeds, make sure that both speeds are turning in the correct direction. When testing, let the motor come to a complete stop before switching speeds.



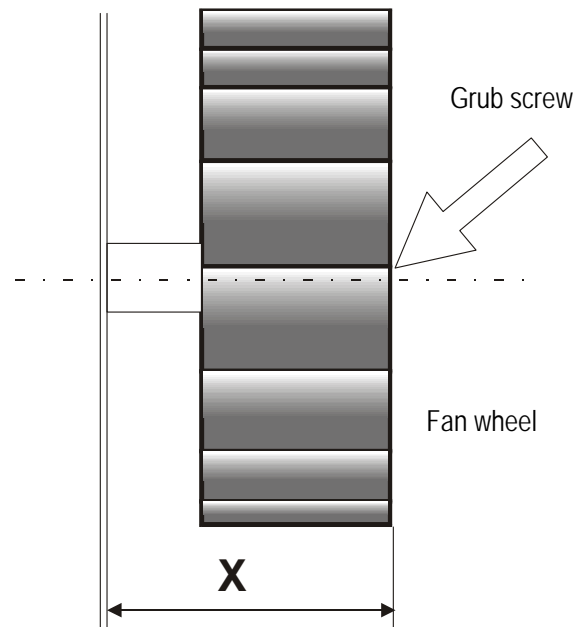
Instruction – Installing the motor:

- Slide spacer bushes over the bolts.
- Set the motor and then the seals onto the motor shaft.
- Set the complete motor (with seals) on the spacer bushes.
- Fasten motor with washer, spring washer and nut..
- Clamp motor connection cable onto the motor protection switch K5 / K55 and lay neatly.
- Place second seal on motor shaft.
- Set fan wheel over motor shaft and set to the correct clearance (see drawing) and secure with .



Note:

- When sliding fan wheel in place, do not bend or tilt.



Model	X [mm]
AR8	52
AR12	75
AR18 / AR28	105
AR40 / AR54 / AR72 / AR108	132
All 6.10	132
All 10.10 except OD10.10C	130
OD10.10C / all 20.10 up to 09/2000	132
OD20.10 (as from 09/2000) / OS20.10	133
All 10.20 / HUD10.18 / All 12.20 with straight suction panel up to 10/99 / all 20.20	130
All 12.20 with slant suction panel as of 10/99	127